

The Whole Dog

Life Stages & Care

Fur Get Me Not

ENRICH. PLAY. THRIVE.



Puppy < 6 months

Emphasis on positive exposures to new things, places, surfaces, & people

- Puppy Classes & Socials
- Crate Training
- Body Handling & Cooperative Care
- Dog Daycare & Puppy Walks 2x/day
- Enrichment School
- On Demand Training
- Socialize with known dogs, better if done with supervision at dog daycare or puppy socials

Emphasis on routine and stimulate mind through added enrichment

- Life Skills Class
- Body Handling & Cooperative Care
- Manners Classes and outdoor classes Walk & Train, City Walks, Nature Walks
- Socialization Station, Brain Games, Scent Work
- Dog Daycare & Midday Dog Walks
- Enrichment School
- Boarding & Pet Sitting
- On Demand Training



Adult

2+ years

Adolescent 6-24 months

Emphasis on continuous reinforcement of good behaviors & enrichment

- Tween Socials
- Crate Training
- Body Handling & Cooperative Care
- Manners classes: Adolescent Manners, Leash Manners, Polite Greetings, Meet & Greet, & Recalls
- Enrichment classes: Brain Games, Fun Tricks, Scent Work,
- Dog Daycare & Midday Dog Walks
- Enrichment School
- Boarding & Pet Sitting
- On Demand Training



Emphasis on comfort, changing body & using enrichment to supplement

- Body Handling & Cooperative Care
- Socialization Station, Brain Games, Smarter Enrichment, Scent Work
- Senior Walks 2x/day
- Enrichment School
- At home Pet Sitting
- Not the best time to add a new puppy or pet to the home, keep things consistent and reliable.

Senior

8+ years



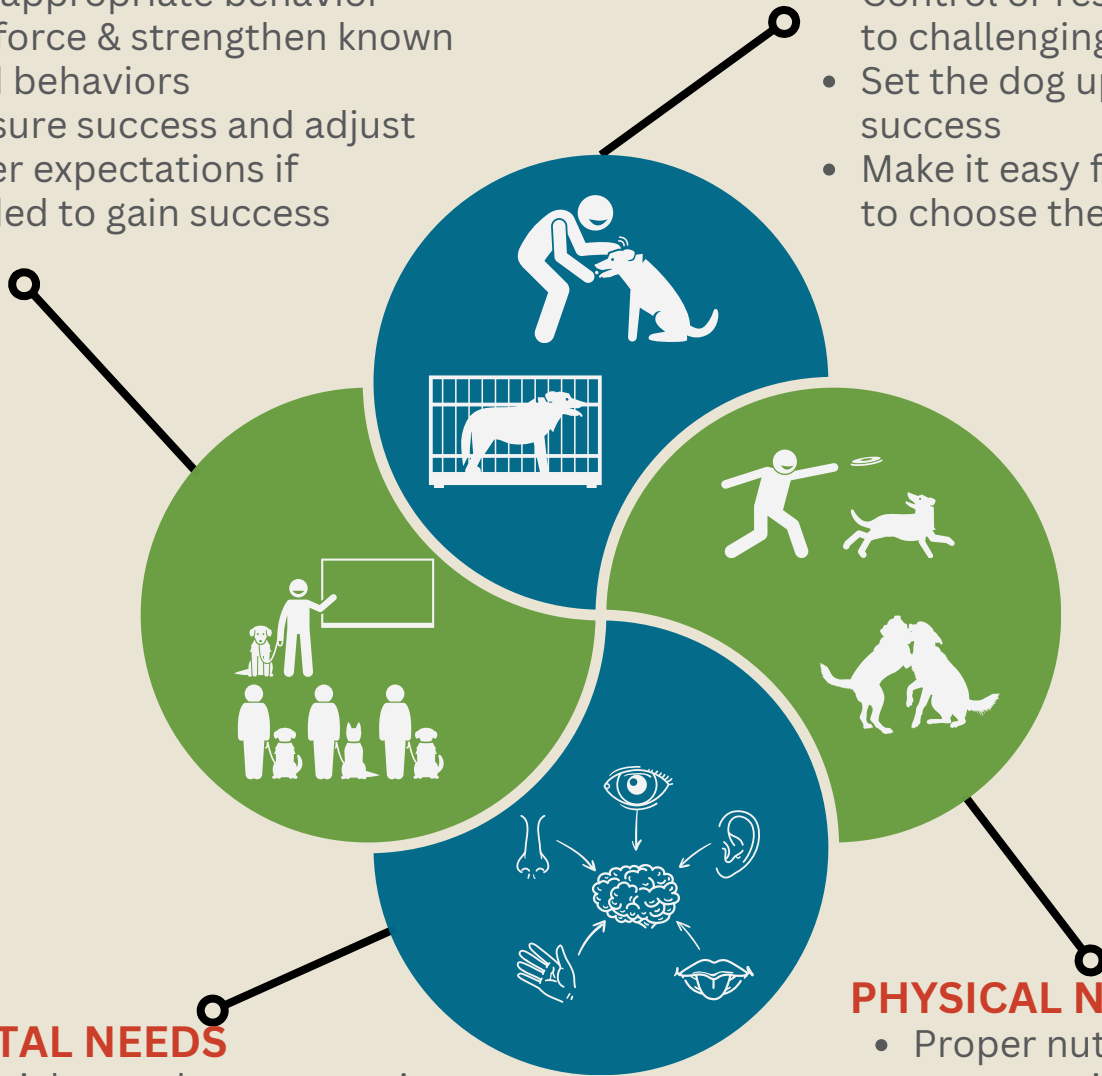
Factors that Affect Behavior

ACTIVE TRAINING

- Observe & identify behaviors
- Teach new skills
- Attend classes or private training and practice at home
- Ignore or replace poor behaviors with appropriate behavior
- Reinforce & strengthen known good behaviors
- Measure success and adjust
- Lower expectations if needed to gain success

MANAGEMENT

- Adjust the environment to prevent undesired behaviors
- Control or restrict access to challenging items
- Set the dog up for success
- Make it easy for the dog to choose the right thing



MENTAL NEEDS

- Enrichment by encouraging natural behaviors like chewing, sniffing, and digging
- Socialization by finding joy in exposure to people, places, animals, and activities
- Sniffing to learn, relax, find comfort, and grow emotionally

PHYSICAL NEEDS

- Proper nutrition, health, preventative vet care, & regular grooming
- Exercise: running, swimming, jumping
- Play: dog daycare, tug, fetch, puzzles, snuffle mats
- Chew (outside of eating) bones, tough toys